



Fused String Combiners

STRCOM 4X-30X



- 23 Models to fit exact system needs
- Fuses included, choice of 6, 8, 10, 12, 15, 20A
- Heavy Duty Construction
- NEMA 4 sealed outdoor rating (4X option)
- Latest UL1741/IEEE1547, CSA 22.2#107.1
- Touch-safe fuse-holders
- Polyester powder-coat Paint (stainless option)
- Generous wiring space
- Mounting tabs for easy mounting
- Options for positive grounded systems, indicator fuse holders, DC surge, DC disconnect, monitoring



Solectria fused string combiners:
Heavy-duty design for commercial, industrial & utility PV



STRCOM 4X-30X

FUSED STRING COMBINER SPECIFICATIONS



Part Number Scheme: STRCOM 10 X 15A (-P) for use with positively grounded systems

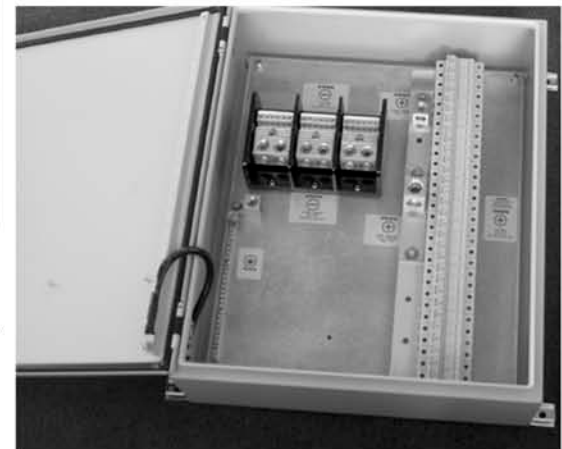
Number of fuse positions

Current Rating of 600VDC Fuses included

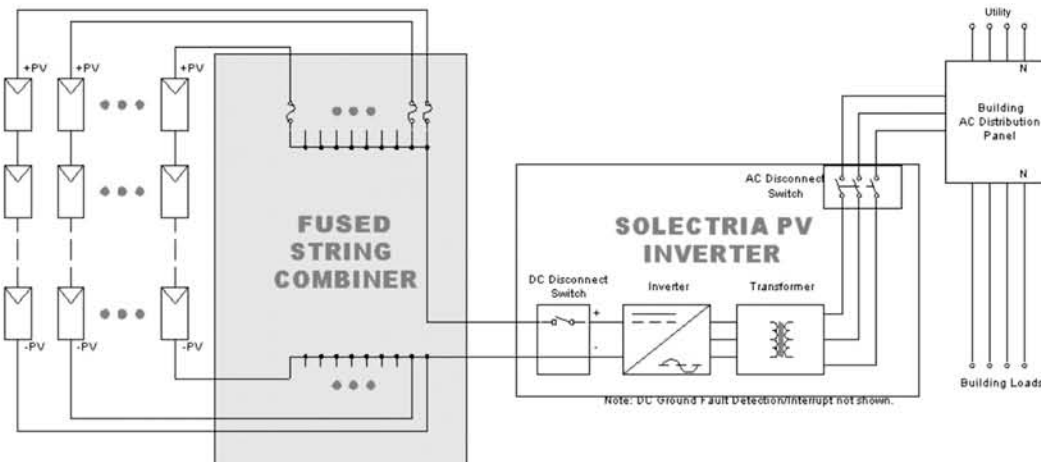
Specifications (for 3 specific models)	STRCOM 10X_A	STRCOM 15X_A	STRCOM 30X_A
Output			
Continuous Operating Current	120A	180A	340A
Max Short Circuit Current	225A	338A	675A
Number of Outputs	1	1	1 (2 avail 21-30)
Voltage Range	0 – 600VDC		
Wire Sizes	4AWG-250KCM	1/0 – 350KCM (Dual wire lug – up to 250KCM)	1/0 – 350KCM (Dual wire lug – up to 250KCM)
	Monopole, for neg. ground sys. (pos ground opt)		
Input			
Array Configuration:	Monopole, for neg. ground sys. (pos ground opt)		
Max V _{OC}	600 VDC		
Max (Array) Short Circuit Current	150 A	225 A	450 A
Fuse positions	10	15	30
Fuse positions available in each series	4, 6, 8, 10, 12	13, 14, 15, 16, 17, 18, 19, 20, 21, 22, 23, 24	25, 26, 27, 28, 29, 30
All fuse positions available	8, 9, 10, 11, 12, 13, 14, 15, 16, 17, 18, 19, 20, 21, 22, 23, 24, 25, 26, 27, 28, 29, 30		
Wire size range	12 – 8 AWG		
Fuse size choices	6A, 8A, 10A, 12A, 15A, 20A		
Fuse Voltage Rating, Type	600VDC, Midget		
Environmental			
Enclosure	Rain-proof, sealed, NEMA4 (stainless NEMA 4X option)		
Locations for Mounting	Indoor, Outdoor, Wall, Array, Rooftop		
General			
Weight lb (kg)	40 (18.2)	41 (18.6)	42 (19.1)
Dimensions: inch [mm]	24[610] H x 20[508] W x 6.75[172] D		
With Mounting Tabs Attached	24 [610] H x 23[584] W x 7[178] D		
Warranty	5 years (warranty extensions available)		

Model (6, 8, 10, 12, 15, 20A)	Fuse Positions	Cont. Amp	Max. Amp
STRCOM 4X_A	4	48	60
STRCOM 6X_A	6	72	90
STRCOM 8X_A	8	96	120
STRCOM 10X_A	10	120	150
STRCOM 12X_A	12	144	180
STRCOM 13X_A	13	156	195
STRCOM 14X_A	14	168	210
STRCOM 15X_A	15	180	225
STRCOM 16X_A	16	192	240
STRCOM 17X_A	17	204	255
STRCOM 18X_A	18	216	270
STRCOM 19X_A	19	228	285
STRCOM 20X_A	20	240	300
STRCOM 21X_A	21	252	315
STRCOM 22X_A	22	264	330
STRCOM 23X_A	23	276	345
STRCOM 24X_A	24	288	360
STRCOM 25X_A	25	300	375
STRCOM 26X_A	26	312	390
STRCOM 27X_A	27	324	400
STRCOM 28X_A	28	336	400
STRCOM 29X_A	29	340	400
STRCOM 30X_A	30	340	400

Option for positively grounded systems (add - P)



STRCOM fused string combiners are heavy duty PV combiners for use in commercial, industrial, and utility-scale PV systems. Listed to UL1741/IEEE1547, CSA 22.2#107.1, they are NEMA 4 sealed construction for mounting on array, roof, walk-up, etc. They come with your choice of 600VDC rated fuses installed. Polyester powder-coat paint and heavy gauge steel for long life (optional stainless steel). Ample wire space for easy array installation. Options: Indicator fuses, DC surge, DC disconnect, Solrenview monitoring. Made in USA.



Lawrence, Massachusetts
USA
Ph: 978.683.9700 (MA)
Ph: 562.608.8913 (CA)
Fax: 978.683.9702
E-mail: inverters@solren.com
www.solren.com